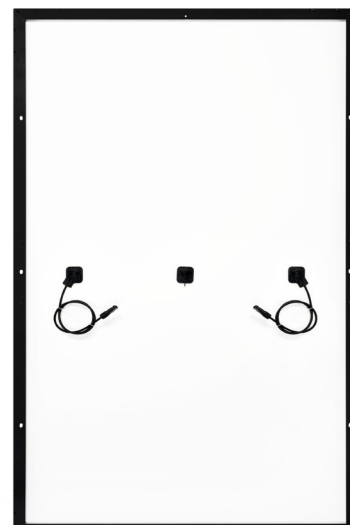
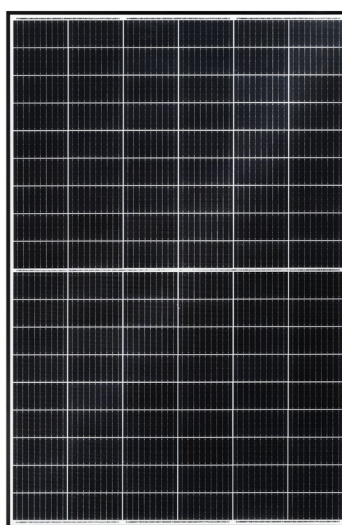


R-WF 108p.3/400



Solar module with PERC-Cells
for best performance.



Highlights

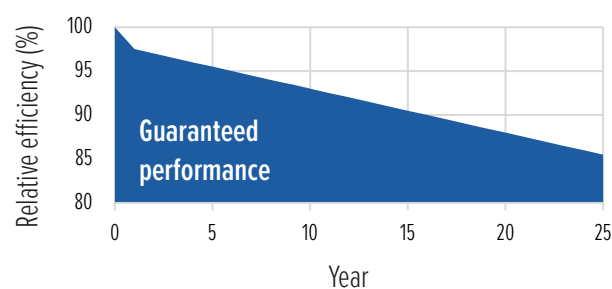
- Cable length 110cm with original STÄUBLI MC4-Connectors
- Black anodized aluminium frame

Technology

- Monocrystalline PERC photovoltaic cells
- 10BB Multi-wire cell connector
- Half-cell technology

Warranty

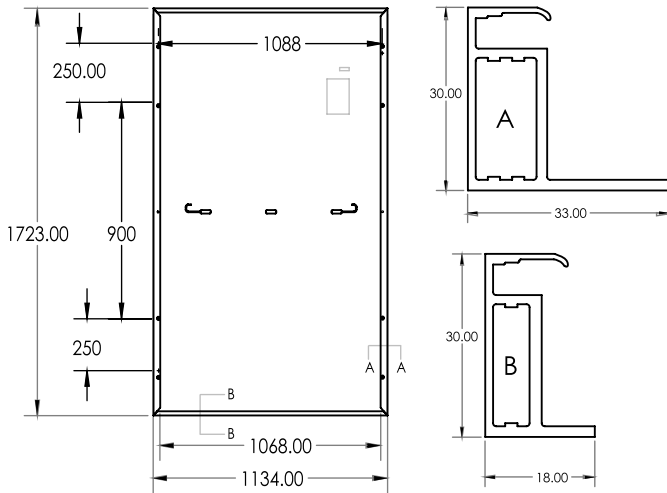
- 12 Years product warranty
25 linear performance warranty
- Max. Max. 2.5% degradation in the first year,
after max. 0.5% each year
- Max. Max. degeneration 14.5%
after 25 years



R-WF 108p.3/400

Module with white backside and black frame

Technical data

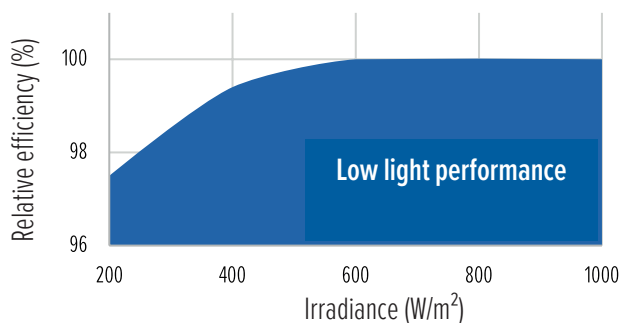


Working conditions

Maximum system voltage	1,500V
Temperature range	-40°C ... +85°C
Mechanical stability	Max. design load front 3,600Pa, test load 5,400Pa Suction loads up to 1,600Pa, test load 2,400Pa
Safety class	II
Reverse current overload	20A
Fire class	C

Temperature coefficients

TC at maximum power (Pmax)	-0.36% / °C
TC of open circuit voltage (Voc)	-0.28% / °C
TC of short circuit current (Isc)	+0.05% / °C



Certificates: IEC 61215:2016 and IEC 61730:2016
This data sheet corresponds to DIN EN 50380
Engineered and designed in Germany

General data

Cell technology	PERC; monocrystalline
Cell size and number	182mm x 91mm; 108 pcs.
Module dimensions	1.723mm x 1.134mm x 30mm
Module weight	21,5kg
Frame	Aluminium anodized (black)
Front glass	3.2mm tempered solar glass with anti-reflective coating
Junction box; IP rating	3 pcs. each with a bypass diode, IP68
Connectors	4mm² solar cable; length 110cm; MC4-original STÄUBLI; IP68
Packing	36 modules vertical on pallet

Electrical data (STC)

Nominal data at standard testing conditions (STC): Irradiance 1,000W/m²; Spectrum AM 1.5; module temperature 25°C; sorting for Pmax 0 to +5W

Module type	R-WF 108p.3/400	R-WF 108p.3/405
STC power output Pmax (Wp)	400	405
Nominal power voltage Vmp (V)	30.82	31.02
Nominal power current Imp (A)	12.94	13.00
Open circuit voltage Voc (V)	36.94	37.14
Short circuit current Isc (A)	13.60	13.65
Module efficiency (%)	20.45	20.72

Tolerance Pmax: ± 3,0%; tolerances Voc, Vmp, Isc, Imp: ± 5,0%

Electrical data (NMOT)

Nominal data at NMOT (Nominal Module Operation Temperature): Irradiation intensity 800W/m²; spectral distribution AM 1.5; ambient temperature 20°C; wind velocity 1m/s

Module type	R-WF 108p.3/400	R-WF 108p.3/405
Solar cell temperature (°C)	45 +/- 2	45 +/- 2
Power output (Wp)	295.00	298.00
Nominal power voltage Vmp (V)	28.78	28.98
Nominal power current Imp (A)	10.25	10.28
Open circuit voltage Voc (V)	34.49	34.69
Short circuit current Isc (A)	10.70	10.75

Tolerance Pmax: ± 3,0%; tolerances Voc, Vmp, Isc, Imp: ± 5,0%

