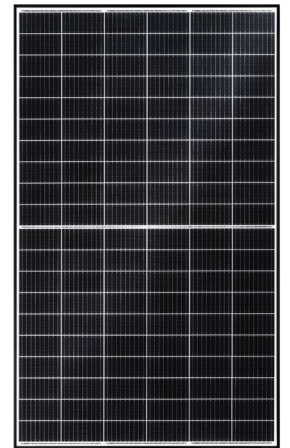
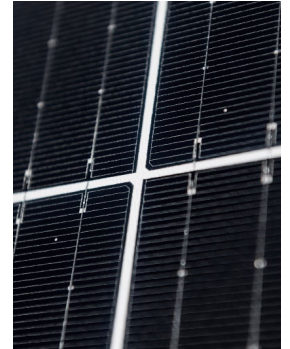


# R-WF 120p.2/370

Solar module with PERC-Cells for best performance.



## Highlights

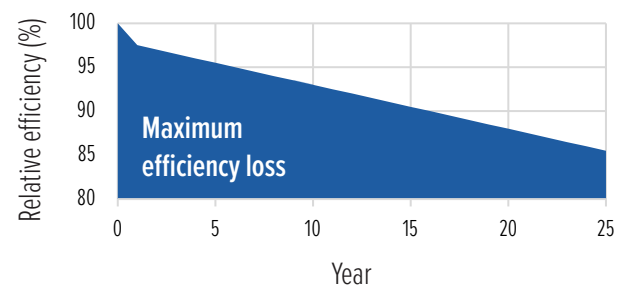
- Module efficiency 20,0%
- Cable length 100cm with original STÄUBLI MC4-Connectors
- Anodized aluminum frame (black)

## Warranty

- 12 Years product warranty  
25 linear performance warranty
- max. Max. 2.5% degradation in the first year,  
after max. 0.5% each year
- max. Max. degeneration 14.5%  
after 25 years

## Technology

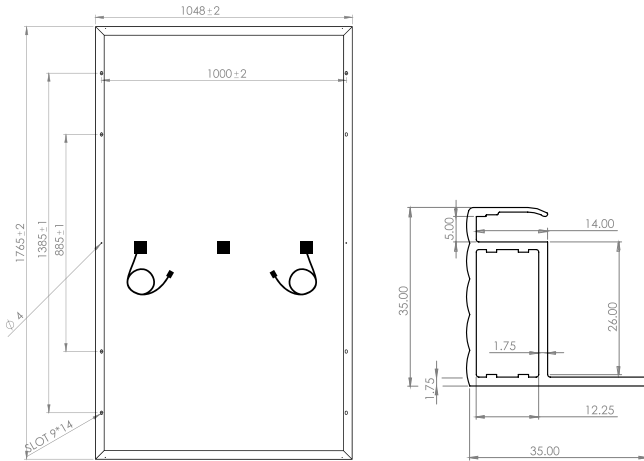
- Monocrystalline photovoltaic cells
- 9BB Multi-wire cell connector
- Half-cell technology



# R-WF 120p.2/370

Module with white back-sheet and black frame.

## Technical data

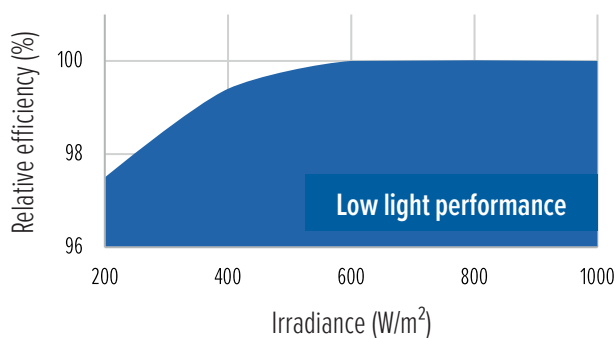


### Connection and working conditions

Maximum system voltage	1,500V
Nominal operating temperature	-40°C ... +85°C
Mechanical resilience	Max. design load front 3.600Pa, test load 5.400Pa Max. design load back 1.600Pa, test load 2.400Pa
Safety class	II
Max. reverse current load	20A
Fire class	C

### Temperature ratings

TC at maximum power (Pmax)	-0.38% / °C
TC of open circuit voltage (Voc)	-0.31% / °C
TC of open circuit current (Isc)	+0.048% / °C



Certificates: IEC 61215:2016 and IEC 61730:2016  
This data sheet is according to DIN EN 50380  
Engineered and designed in Germany

### General data

Cell technology	PERC; monocrystalline
Cell size and number	166mm x 83mm; 120 pcs.
Module dimensions	1,765mm x 1,048mm x 35mm
Module weight	21.2kg
Frame	Aluminium anodized (black)
Front glass	3.2mm tempered solar glass with anti-reflective coating
Junction box	3 Pcs. each with a bypass diode, IP68
Connectors	4mm <sup>2</sup> solar cable; length 100cm; MC4-original STÄUBLI; IP68
Packing	31 Module vertical on pallet

### Electrical data (STC)

Nominal data at standard testing conditions (STC): Irradiance 1,000W/m<sup>2</sup>; Spectrum AM 1.5; module temperature 25°C; sorting according Pmax 0 to +5W

Module type	R-WF 120p.2/370
STC Power output Pmax (Wp)	370
Nominal power voltage Vmp (V)	34.01
Nominal power current Imp (A)	10.80
Open circuit voltage Voc (V)	40.81
Short circuit current Isc (A)	11.33
Module efficiency	20,0%

Tolerance Pmax: ± 3,0%; tolerances Voc, Vmp, Isc, Imp: ± 5,0%

### Electrical data (NMOT)

Nominal data at NMOT (Nominal Module Operation Temperature): Irradiation intensity 800W/m<sup>2</sup>; spectral distribution AM 1.5; ambient temperature 20°C; wind velocity 1m/s

Solar cell temperature (°C)	45 +/- 2
Power output (Wp)	272
Nominal power voltage Vmp (V)	31.26
Nominal power current Imp (A)	7.72
Open circuit voltage Voc (V)	37.75
Short circuit current Isc (A)	9.13

Tolerance Pmax: ± 3,0%; tolerances Voc, Vmp, Isc, Imp: ± 5,0%



**take way**  
for an easy way  
DE 63944028