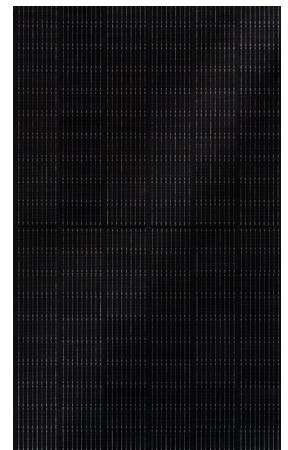
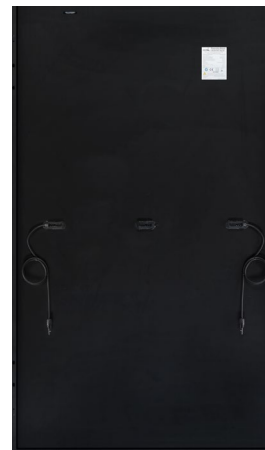
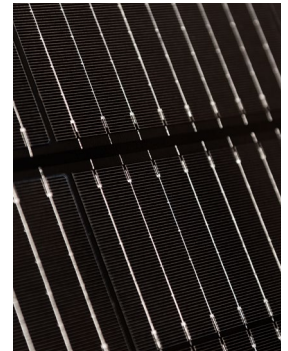


# R-BF 120p.2/365

Solar module with PERC-Cells for best performance.



## Highlights

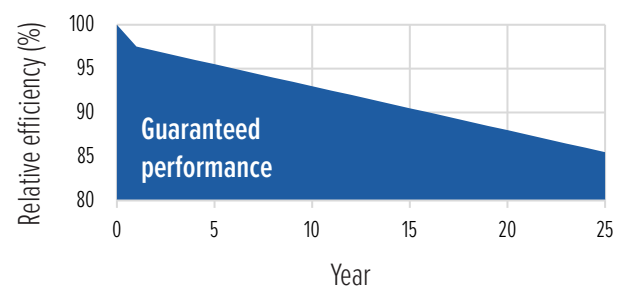
- Full black design
- Cable length 110cm with original STÄUBLI MC4-Connectors
- Black anodized aluminum frame

## Warranty

- 12 Years product warranty  
25 linear performance warranty
- Max. Max. 2.5% degradation in the first year, after max. 0.5% each year
- Max. Max. degeneration 14.5% after 25 years

## Technology

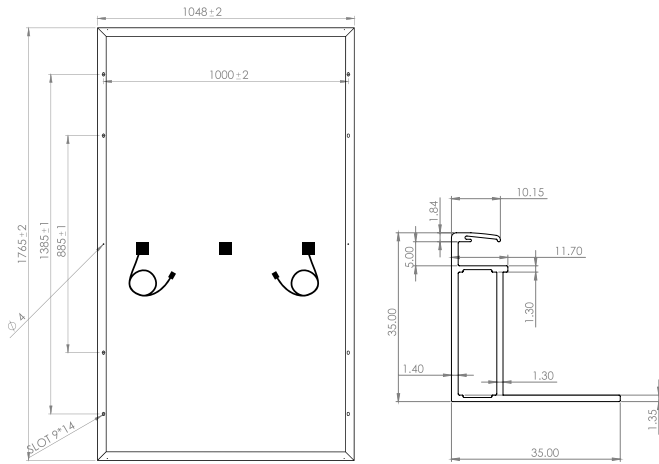
- Monocrystalline photovoltaic cells
- 9BB Multi-wire cell connector
- Half-cell technology



# R-BF 120p.2/365

Module with black backside and black frame

## Technical data

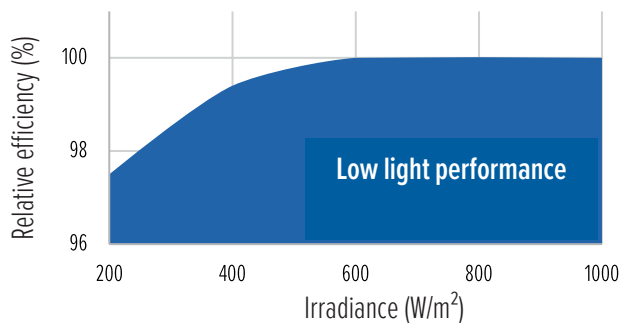


### Working conditions

Maximum system voltage	1,500V
Temperature range	-40°C ... +85°C
Mechanical stability	Max. design load front 3,600Pa, test load 5,400Pa Suction loads up to 1,600Pa, test load 2,400Pa
Safety class	II
Reverse current overload	20A
Fire class	C

### Temperature ratings

TC at maximum power (Pmax)	-0.28% / °C
TC of open circuit voltage (Voc)	-0.36% / °C
TC of short circuit current (Isc)	+0.05% / °C



Certificates: IEC 61215:2016 and IEC 61730:2016  
This data sheet corresponds to DIN EN 50380  
Engineered and designed in Germany

### General data

Cell technology	PERC; monocrystalline
Cell size and number	166mm x 83mm; 120 pcs.
Module dimensions	1,765mm x 1,048mm x 35mm
Module weight	21.0kg
Frame	Aluminium anodized (black)
Front glass	3.2mm tempered solar glass with anti-reflective coating
Junction box	3 Pcs. each with a bypass diode, IP68
Connectors	4mm <sup>2</sup> solar cable; length 110cm; MC4-original STÄUBLI; IP68
Packing	31 Module vertical on pallet

### Electrical data (STC)

Nominal data at standard testing conditions (STC): Irradiance 1,000W/m<sup>2</sup>; Spectrum AM 1.5; module temperature 25°C; sorting for Pmax 0 to +5W

Module type	R-BF 120p.2/365
STC power output Pmax (Wp)	365
Nominal power voltage Vmp (V)	33.90
Nominal power current Imp (A)	10.77
Open circuit voltage Voc (V)	41.10
Short circuit current Isc (A)	11.28
Module efficiency (%)	19.7

Tolerance Pmax: ± 3,0%; tolerances Voc, Vmp, Isc, Imp: ± 5,0%

### Electrical data (NMOT)

Nominal data at NMOT (Nominal Module Operation Temperature): Irradiation intensity 800W/m<sup>2</sup>; spectral distribution AM 1.5; ambient temperature 20°C; wind velocity 1m/s

Solar cell temperature (°C)	45 +/- 2
Power output (Wp)	274
Nominal power voltage Vmp (V)	31.50
Nominal power current Imp (A)	8.71
Open circuit voltage Voc (V)	38.50
Short circuit current Isc (A)	9.17

Tolerance Pmax: ± 3,0%; tolerances Voc, Vmp, Isc, Imp: ± 5,0%



**takeaway**  
for an easy way  
DE 63944028